

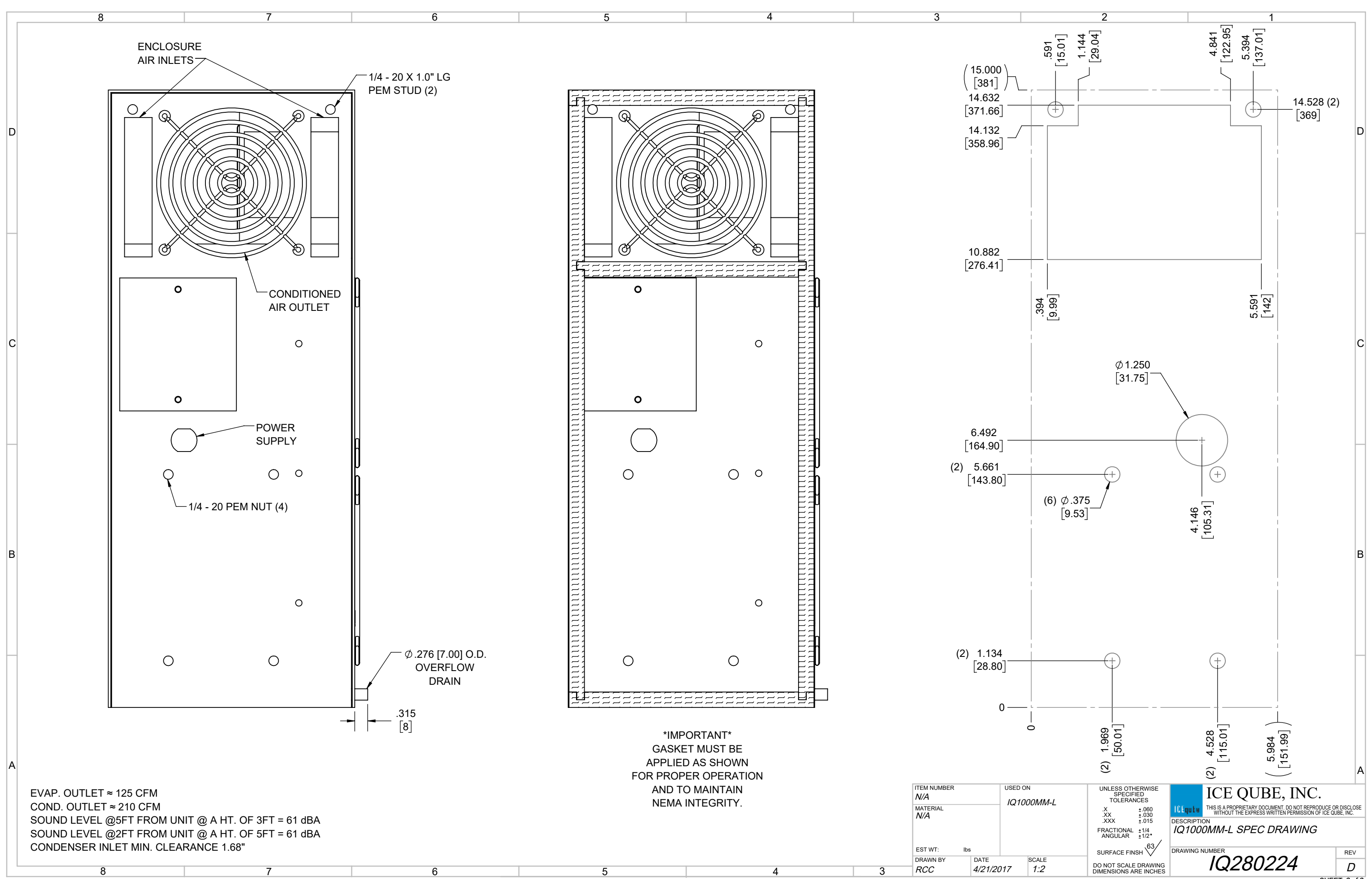
IQ1000MM-L  
 COOLING CAPACITY: 1000 BTUH (293W) @131°F (55°C)  
 MAXIMUM AMPS: 3.1 (372W) @120V/60HZ  
 MAXIMUM AMPS: 1.5 (345W) @230V/60HZ  
 MAXIMUM AMPS: 8.0 (384W) @48VDC  
 MAXIMUM AMPS: 10.6 (254W) @24VDC  
 MAXIMUM OPERATING TEMP: 131°F (55°C)  
 MINIMUM OPERATING TEMP: -40°F (-40°C)  
 DIMENSIONS: 15.00" (381MM) H X 5.98" (152MM) W X 6.31" (160MM) D  
 WEIGHT 120 & 230V: 21 LBS (9.5KG)  
 WEIGHT 24 & 48VDC: 13.8 LBS (6.3KG)

| REV | REVISION                           | CHG | DATE      | APP | DATE | CN # |
|-----|------------------------------------|-----|-----------|-----|------|------|
| D   | ADDED DC VOLTAGE, UPDATED CUTOUT   | RCC | 3/6/2019  |     |      |      |
| C   | ADDED CFM, dBA, AND CLEARANCE INFO | RCC | 3/30/2018 |     |      | 1351 |
| B   | ADDED WATTAGE INFO                 | RCC | 1/4/2018  |     |      |      |
| A   | REDRAWN IN SW                      | RCC | 4/21/2017 |     |      |      |

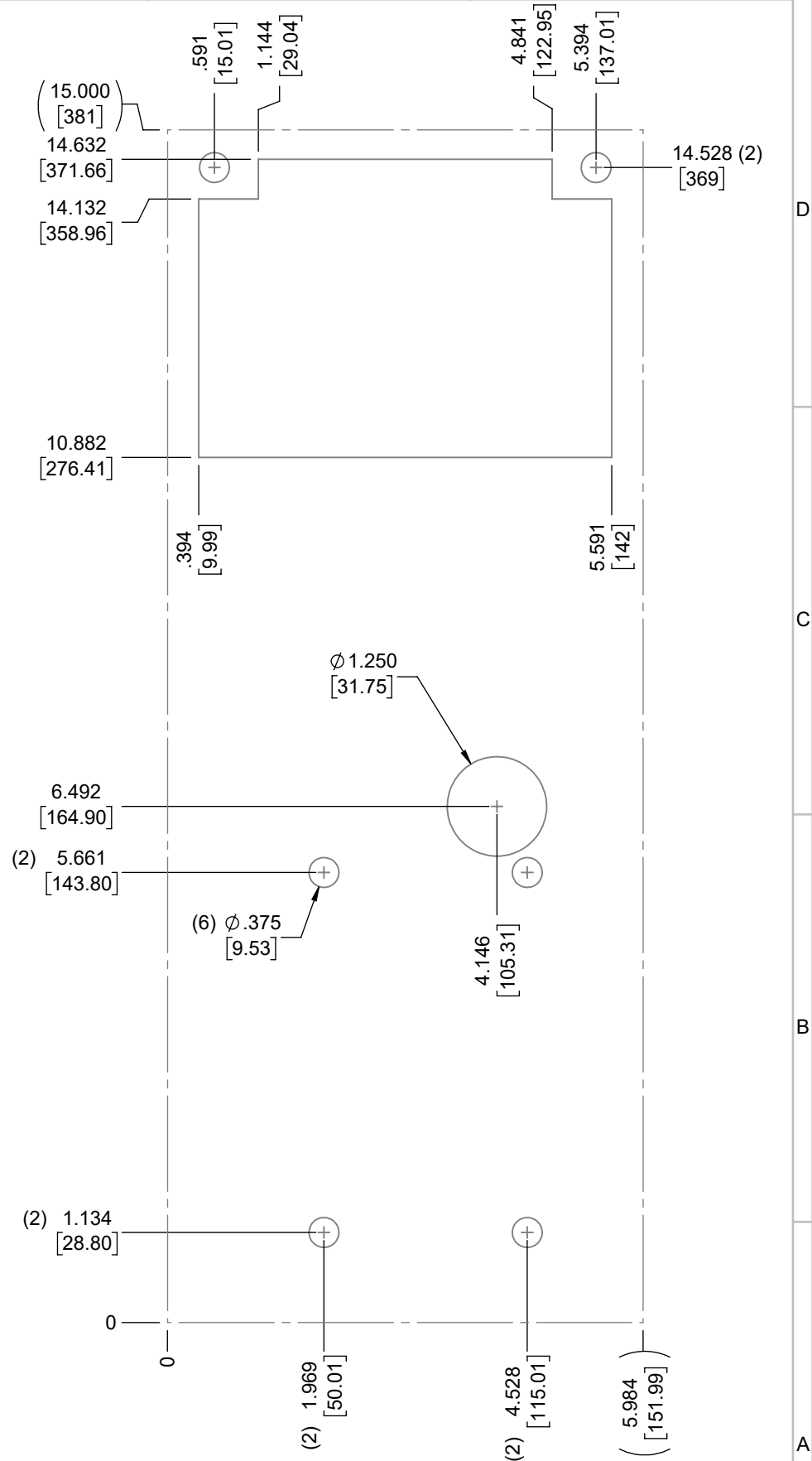
|             |     |         |            |
|-------------|-----|---------|------------|
| ITEM NUMBER | N/A | USED ON | IQ1000MM-L |
| MATERIAL    | N/A |         |            |
| EST WT:     | lbs |         |            |
| DRAWN BY    | RCC | DATE    | 4/21/2017  |
|             |     | SCALE   | 1:4        |

UNLESS OTHERWISE SPECIFIED TOLERANCES  
 .X ±.060  
 .XX ±.030  
 .XXX ±.015  
 FRACTIONAL ±1/16  
 ANGULAR ±1/2°  
 SURFACE FINISH 63  
 DO NOT SCALE DRAWING DIMENSIONS ARE INCHES

**ICE QUBE, INC.**  
THIS IS A PROPRIETARY DOCUMENT. DO NOT REPRODUCE OR DISCLOSE WITHOUT THE EXPRESS WRITTEN PERMISSION OF ICE QUBE, INC.  
 DESCRIPTION  
**IQ1000MM-L SPEC DRAWING**  
 DRAWING NUMBER  
**IQ280224**  
 REV  
**D**



EVAP. OUTLET ≈ 125 CFM  
 COND. OUTLET ≈ 210 CFM  
 SOUND LEVEL @5FT FROM UNIT @ A HT. OF 3FT = 61 dBA  
 SOUND LEVEL @2FT FROM UNIT @ A HT. OF 5FT = 61 dBA  
 CONDENSER INLET MIN. CLEARANCE 1.68"



|                    |                       |  |  |
|--------------------|-----------------------|--|--|
| ITEM NUMBER<br>N/A | USED ON<br>IQ1000MM-L | UNLESS OTHERWISE SPECIFIED TOLERANCES<br>X ±.060<br>.XX ±.030<br>.XXX ±.015<br>FRACTIONAL ±1/4<br>ANGULAR ±1/2°<br>SURFACE FINISH 63 | <p>ICE QUBE, INC.<br/> <small>THIS IS A PROPRIETARY DOCUMENT. DO NOT REPRODUCE OR DISCLOSE WITHOUT THE EXPRESS WRITTEN PERMISSION OF ICE QUBE, INC.</small><br/>       DESCRIPTION<br/> <b>IQ1000MM-L SPEC DRAWING</b></p> |
| MATERIAL<br>N/A    |                       | DO NOT SCALE DRAWING DIMENSIONS ARE INCHES   |  |
| EST WT: lbs        | DATE<br>4/21/2017     | SCALE<br>1:2   | DRAWING NUMBER<br><b>IQ280224</b>  |
| DRAWN BY<br>RCC    |                       |  | REV<br>D   |