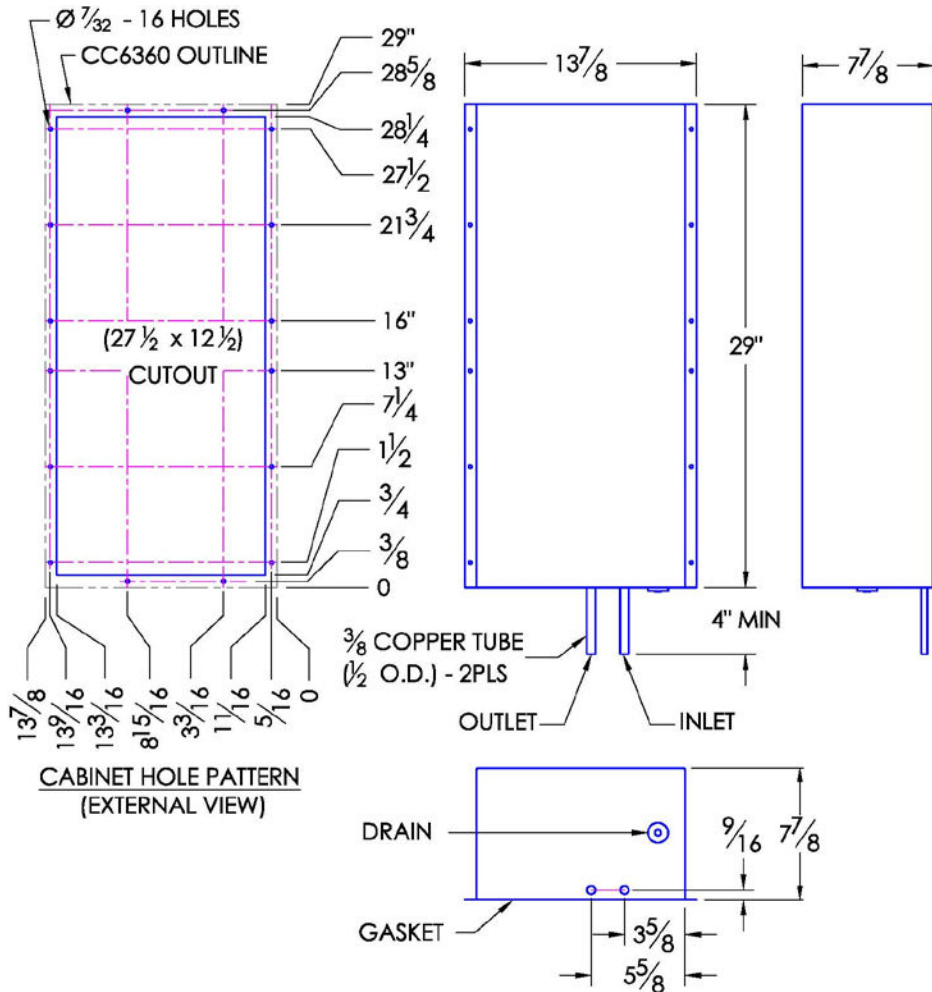


## CC6360 TYPE 12 COMPACT CABINET COOLER AIR-TO-WATER FLUSH-MOUNT MODEL

Model	Weight	Rating @ 40°C ΔT BTU / hr	Amps Current Draw at 115 volts AC	Fan Size	Dimensions-Inches (H x W x D)
CC6360	32 lbs	21,800	0.9	3 x 6"	29 x 13-7/8 x 7-7/8

Efficiency: 159.7 Watts / °C ΔT based on average internal cabinet temperature.



### SPECIFICATIONS

- UL Listed for TYPE 12 environments.
- CC6360 Rated cooling: 6,388 Watts mounted to an uninsulated 72" x 36" x 24" Cabinet with 1 GPM of water at 20°C, 40°C ambient air and 60°C cabinet air temperature.
- Designed for surface mounting on the outside of cabinet.
- Housing is aluminum (color is black).
- External water inlet and outlet connections.
- Equipped with mounting gasket to maintain air tight seal.
- Available with AC (115 & 230V) and DC (12, 24, & 48V) fans. DC version includes junction box, consult website.
- Vertical mounting only.
- Coolant water pressure: Pressure tested to 100 psi. Safe working pressure is 60 psi.
- Recommended coolant flow rate (gallons per minute): 1 GPM
- F For design, quote, and sizing assistance: call (888) 754-6329, (416) 288-1736**

Subject to change without notice.



**Thermal Solutions**  
Products Incorporated

**Pelmar Engineering Ltd.**  
Tel. (888) 754-6329  
sales@pelmareng.com  
www.pelmareng.com

**CC6360 TYPE 12**

CCS-PBD-8.2.1-883345-C