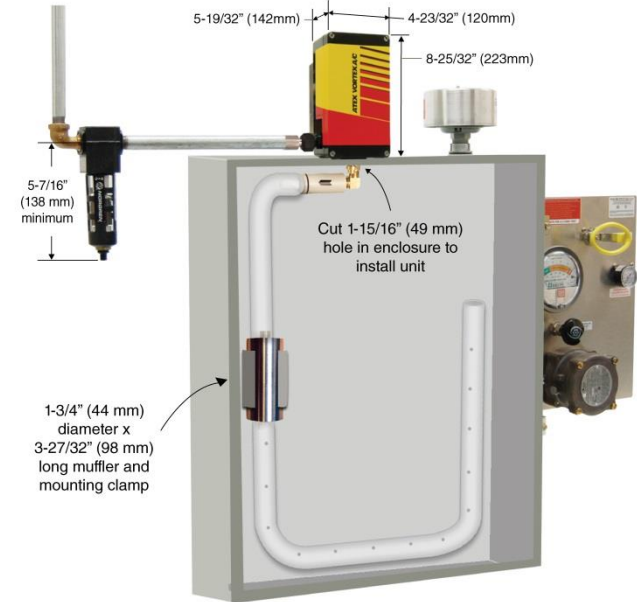
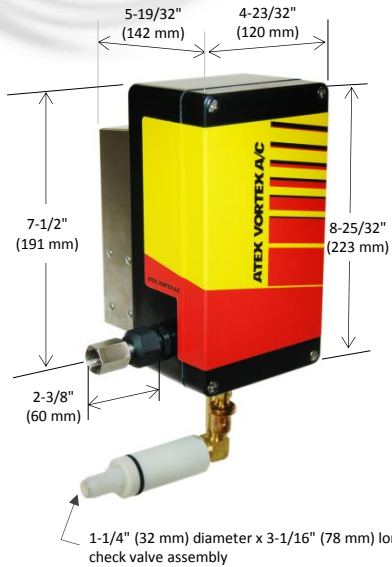


# ATEX Vortex A/C Enclosure Cooler

Models 74x5 and 73x5  
(ATEX Hazardous Location)

ATEX Zones 2 and 22  
Temperature Class T4 Areas



## SPECIFICATIONS

Product	Thermostat	Includes filter?	Cooling Capacity	
			BTU/hr	Watts
7415	Mechanical	Yes	900	264
7315	Mechanical	No	900	264
7425	Mechanical	Yes	1500	440
7325	Mechanical	No	1500	440
7435	Mechanical	Yes	2500	733
7335	Mechanical	No	2500	733

Notes: Specifications are for 100 psig (6.9 bar) compressed air  
Cold Air Ducting Kits and Cold Air Mufflers included with 74x5 and 73x5  
Use of a purge system is required. Purge system and spark arrestor are not included.



**Pelmar Engineering Ltd.**  
Tel. (888) 754-6329, (416) 288-1736  
E-mail: [sales@pelmareng.com](mailto:sales@pelmareng.com)  
Web site: [www.pelmareng.com](http://www.pelmareng.com)