

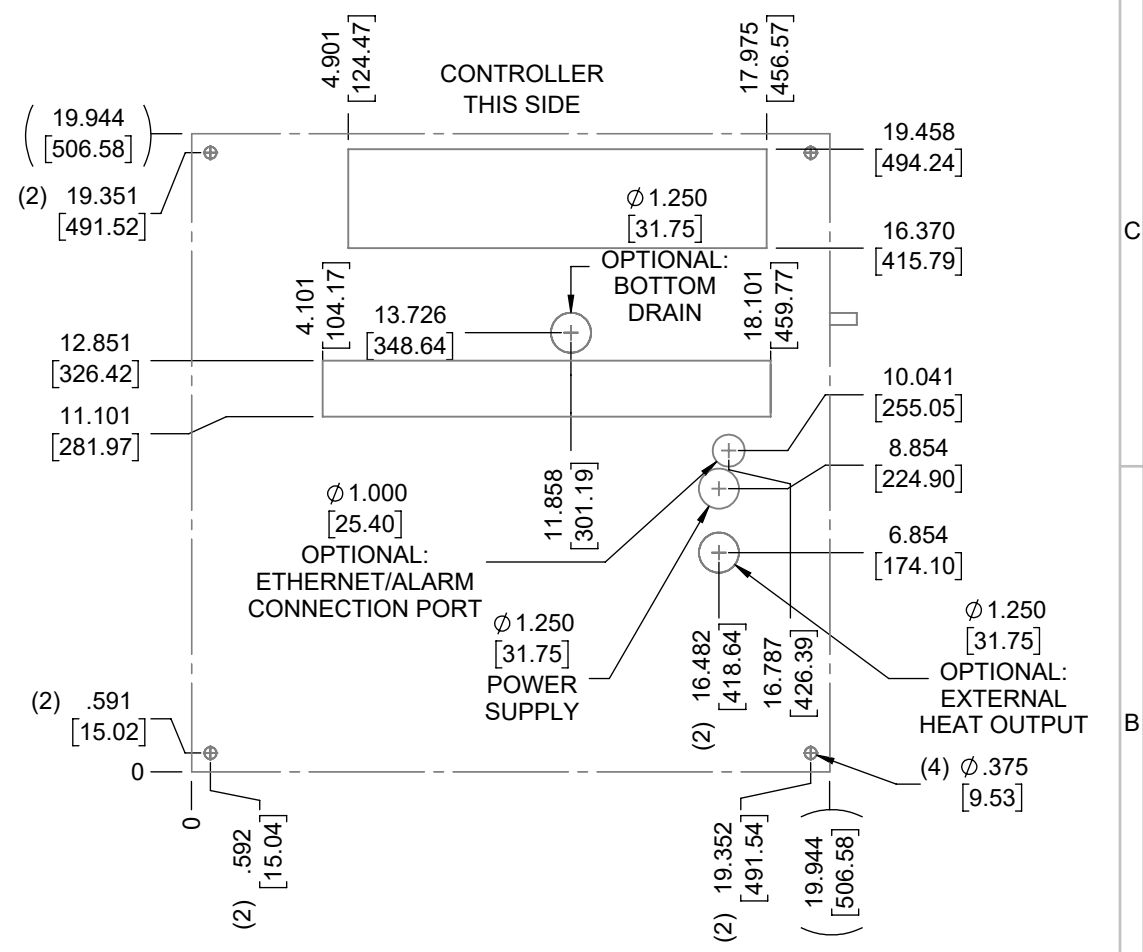
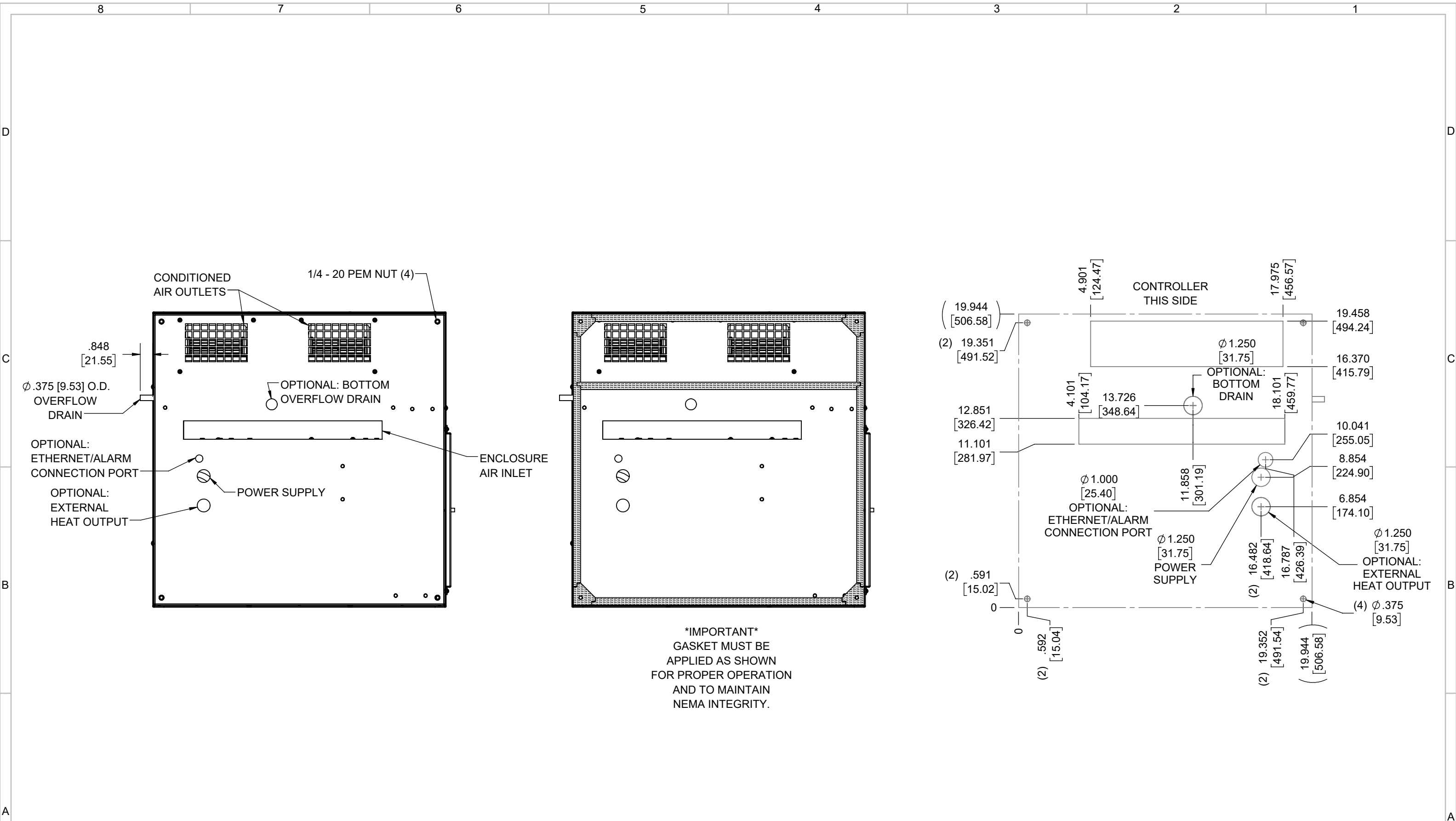
IQ3000T  
 COOLING CAPACITY: 3000 BTUH (880W) @131°F (55°C)  
 MAXIMUM AMPS: 7.5 (900W) @120V/60HZ  
 MAXIMUM AMPS: 3.9 (897W) @230V/60HZ  
 MAXIMUM OPERATING TEMP: 131°F (55°C)  
 MINIMUM OPERATING TEMP: -40°F (-40°C)  
 DIMENSIONS: 12.06" (306MM) H X 19.94" (507MM) W X 20.06" (510MM) D  
 WEIGHT: 72 LBS (32.7KG)

REV	REVISION	CHG	DATE	APP	DATE	CN #
C	ADDED CFM, dBA, AND CLEARANCE INFO	RCC	3/28/2018			1351
B	ADDED WATTAGE INFO	RCC	1/3/2018			
A	REDRAWN IN SW	RCC	4/19/2017			

ITEM NUMBER	N/A	USED ON	IQ3000T
MATERIAL	N/A		
EST WT:	lbs		
DRAWN BY	RCC	DATE	4/19/2017
		SCALE	1:8

UNLESS OTHERWISE SPECIFIED TOLERANCES	
.X	±.060
.XX	±.030
.XXX	±.015
FRACTIONAL	±1/16
ANGULAR	±1/2°
SURFACE FINISH $\sqrt{63}$	
DO NOT SCALE DRAWING DIMENSIONS ARE INCHES	

**ICE QUBE, INC.**  
THIS IS A PROPRIETARY DOCUMENT. DO NOT REPRODUCE OR DISCLOSE WITHOUT THE EXPRESS WRITTEN PERMISSION OF ICE QUBE, INC.  
 DESCRIPTION  
**IQ3000T SPEC DRAWING**  
 DRAWING NUMBER  
**IQ320702**  
 REV  
**C**



EVAP. OUTLET ≈ 236 CFM  
 COND. OUTLET ≈ 410 CFM  
 SOUND LEVEL @5FT FROM UNIT @ A HT. OF 3FT = 59 dBA  
 SOUND LEVEL @2FT FROM UNIT @ A HT. OF 5FT = 59 dBA  
 CONDENSER INLET MIN. CLEARANCE 2.76"

ITEM NUMBER N/A	USED ON IQ3000T	UNLESS OTHERWISE SPECIFIED TOLERANCES X ±.060 XX ±.030 XXX ±.015 FRACTIONAL ±1/4 ANGULAR ±1/2°	<b>ICE QUBE, INC.</b> <small>THIS IS A PROPRIETARY DOCUMENT. DO NOT REPRODUCE OR DISCLOSE WITHOUT THE EXPRESS WRITTEN PERMISSION OF ICE QUBE, INC.</small> DESCRIPTION <b>IQ3000T SPEC DRAWING</b>
MATERIAL N/A		SURFACE FINISH 63	
EST. WT.: lbs		DO NOT SCALE DRAWING DIMENSIONS ARE INCHES	DRAWING NUMBER <b>IQ320702</b>
DRAWN BY RCC	DATE 4/19/2017	SCALE 1:6	REV C