

IQ12000EX

CE 0539 II 2 G Ex db eb ib IIB+H2 T4 Gb

NOMINAL COOLING CAPACITY:

13008 BTUH (3815W) @ 140-140°F (60°C-60°C)

MAXIMUM AMPS: 11.20 (2464W) @ 220V/50Hz

MAXIMUM AMPS: 11.20 (2464W) @ 220V/60Hz

MAXIMUM AMPS: 12.07 (2776W) @ 230V/50Hz

MAXIMUM AMPS: 12.07 (2776W) @ 230V/60Hz

MAXIMUM AMPS: 11.09 (2662W) @ 240V/50Hz

MAXIMUM AMPS: 11.89 (2854W) @ 240V/60Hz

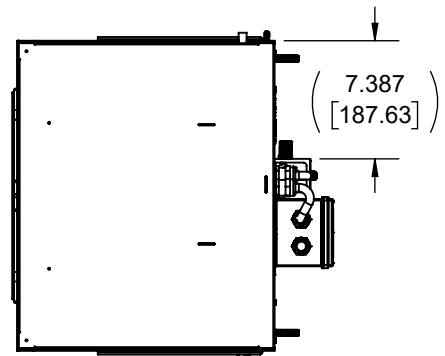
MAXIMUM OPERATING TEMPERATURE: 140°F (60°C)

MINIMUM OPERATING TEMPERATURE: -40°F (-40°C)

DIMENSIONS: 51.090" (1298MM) H x 19.376" (492MM) W x 16.090" (409MM) D

WEIGHT: 250 LBS (114KG)

REFRIGERANT CHARGE: R407C 4LB 10OZ (2098G)



A	PRODUCTION RELEASE	RCC	8/2/2018				
REV	REVISION	CHG	DATE	APP	DATE	CN #	

ITEM NUMBER	N/A	USED ON	IQ12000EX
MATERIAL	N/A		
EST WT:	lbs		
DRAWN BY	JGG	DATE	8/2/2018
		SCALE	1:12

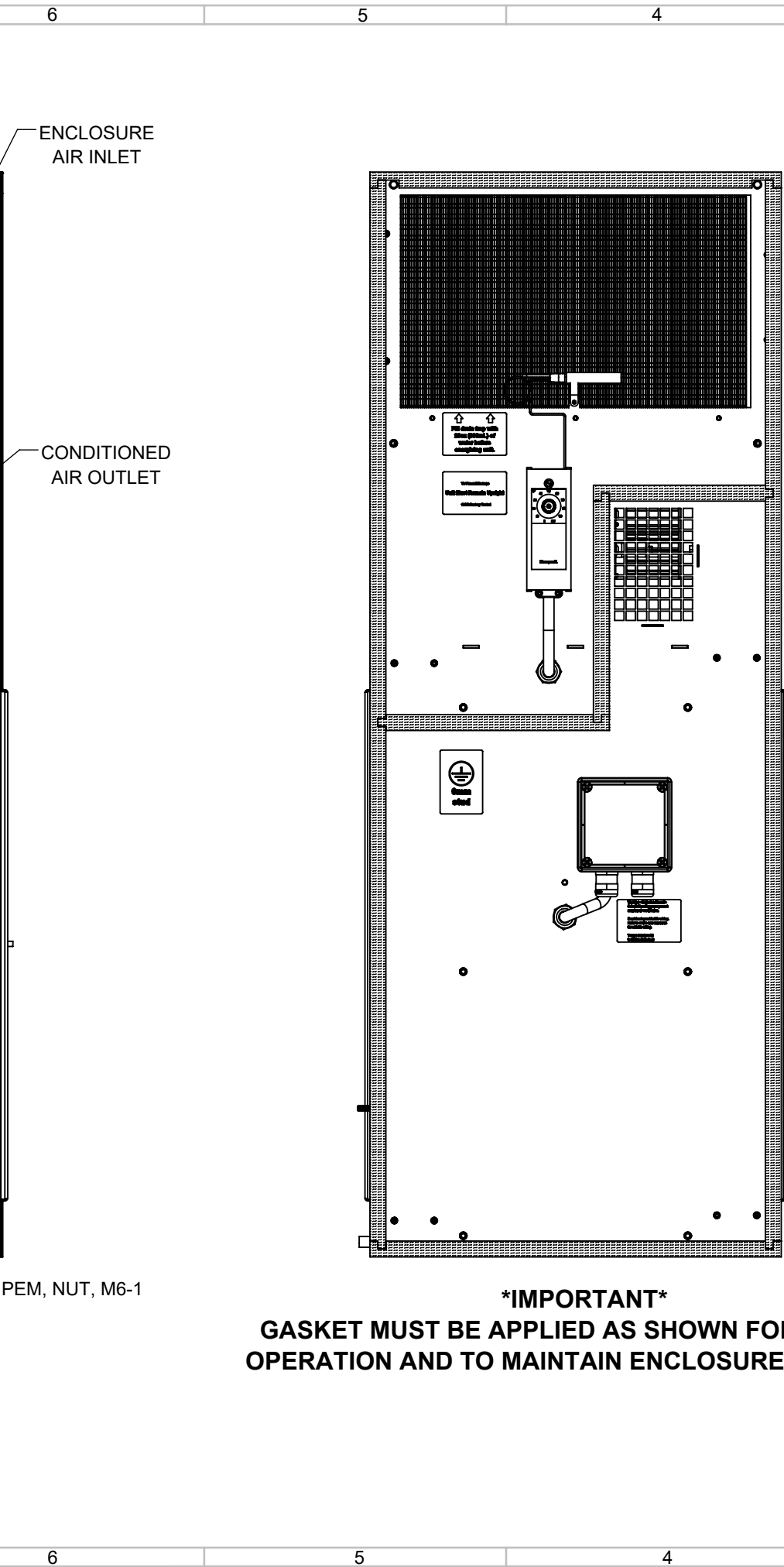
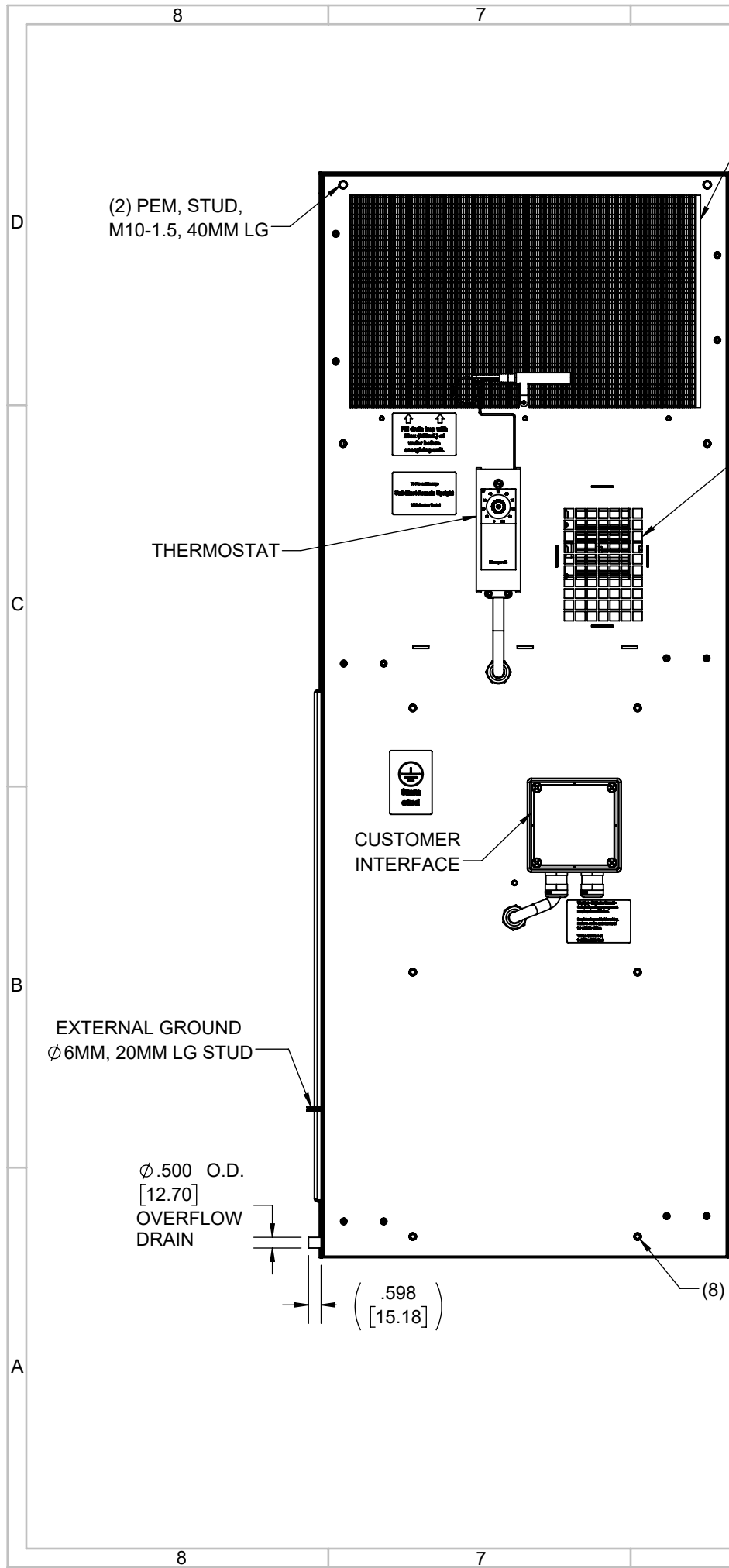
UNLESS OTHERWISE SPECIFIED TOLERANCES	
.X	±.060
.XX	±.030
.XXX	±.015
FRACTIONAL	±1/16
ANGULAR	±1/2°
SURFACE FINISH ⁶³	
DO NOT SCALE DRAWING DIMENSIONS ARE INCHES	

ICE QUBE, INC.
THIS IS A PROPRIETARY DOCUMENT. DO NOT REPRODUCE OR DISCLOSE WITHOUT THE EXPRESS WRITTEN PERMISSION OF ICE QUBE, INC.

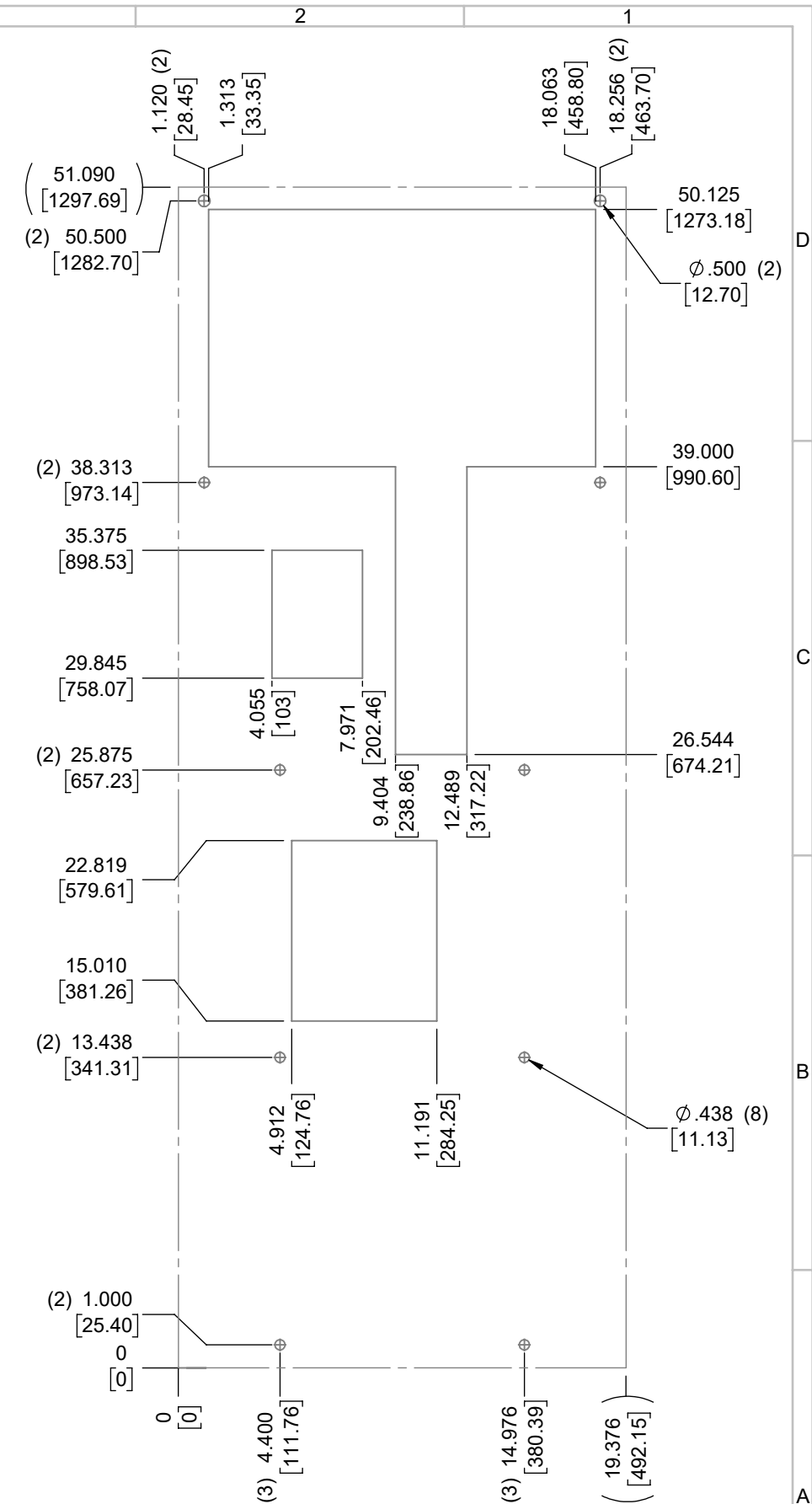
DESCRIPTION
IQ12000EX SPEC DRAWING

DRAWING NUMBER
IQ351993

REV
A



IMPORTANT
GASKET MUST BE APPLIED AS SHOWN FOR PROPER OPERATION AND TO MAINTAIN ENCLOSURE INTEGRITY



ITEM NUMBER N/A	USED ON IQ12000EX	UNLESS OTHERWISE SPECIFIED TOLERANCES X \pm .060 .XX \pm .030 .XXX \pm .015 FRACTIONAL \pm 1/4 ANGULAR \pm 1/2°	<p>ICE QUBE, INC. <small>THIS IS A PROPRIETARY DOCUMENT. DO NOT REPRODUCE OR DISCLOSE WITHOUT THE EXPRESS WRITTEN PERMISSION OF ICE QUBE, INC.</small></p>
MATERIAL N/A		<p>EST WT: lbs</p> <p>DRAWN BY: JGG</p> <p>DATE: 8/2/2018</p> <p>SCALE: 1:7</p> <p>DO NOT SCALE DRAWING DIMENSIONS ARE INCHES</p>	
DESCRIPTION IQ12000EX SPEC DRAWING			DRAWING NUMBER IQ351993
REV			A