

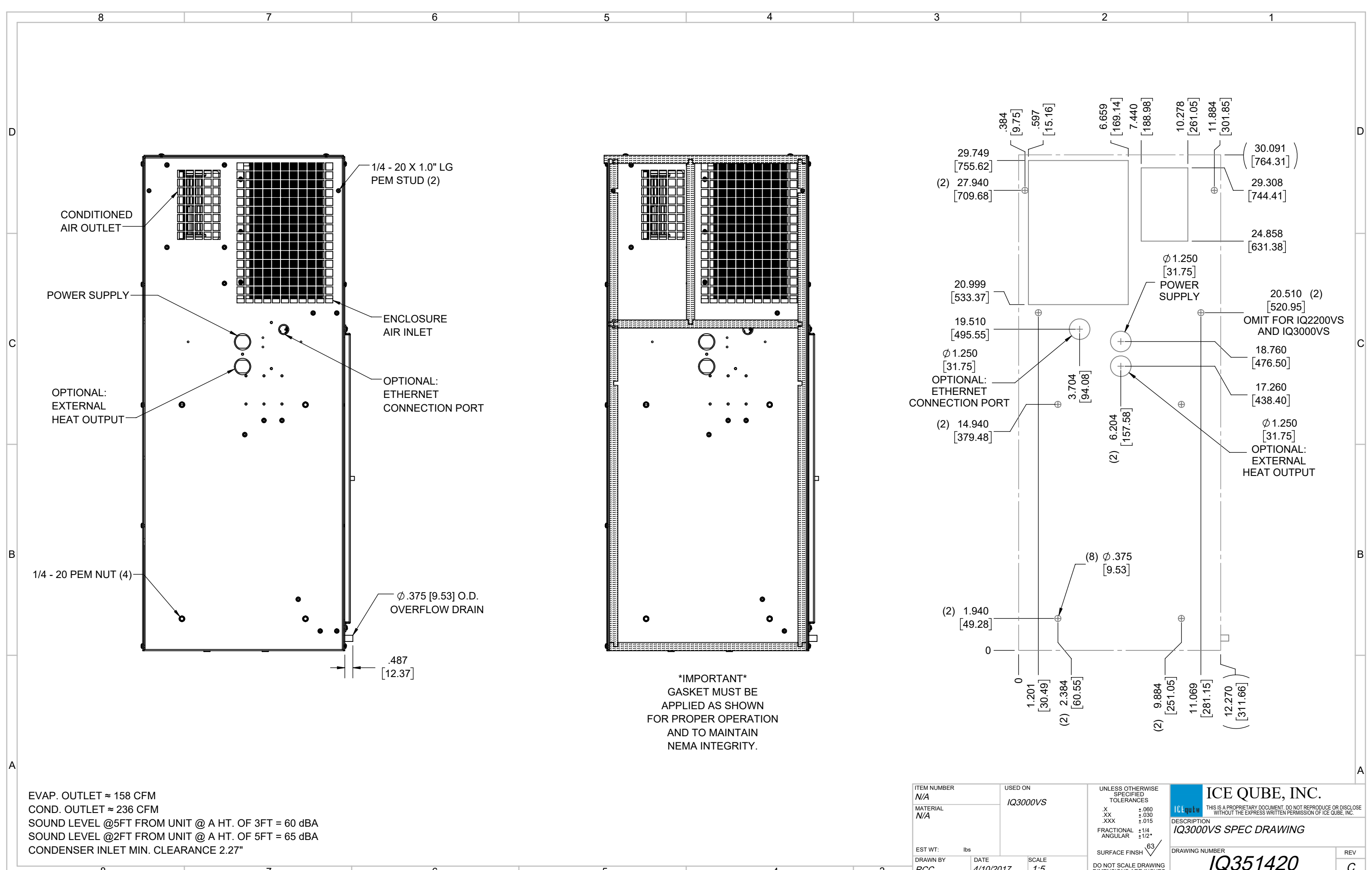
IQ3000VS
 COOLING CAPACITY: 3000 BTUH (880W) @131°F (55°C)
 MAXIMUM AMPS: 6.9 (828W) @120V/60HZ
 MAXIMUM AMPS: 3.4 (782W) @230V/60HZ
 MAXIMUM OPERATING TEMP: 131°F (55°C)
 MINIMUM OPERATING TEMP: -40°F (-40°C)
 DIMENSIONS: 30.09" (764MM) H X 12.28" (312MM) W X 6.34" (161MM) D
 WEIGHT: 55 LBS (25KG)

REV	REVISION	CHG	DATE	APP	DATE	CN #
C	ADDED CFM, dBA, AND CLEARANCE INFO	RCC	3/28/2018			1351
B	ADDED WATTAGE INFO	RCC	1/2/2018			
A	REDRAWN IN SW	RCC	4/10/2017			

ITEM NUMBER N/A	USED ON IQ3000VS
MATERIAL N/A	
EST WT: lbs	
DRAWN BY RCC	DATE 4/10/2017
	SCALE 1:6

UNLESS OTHERWISE SPECIFIED TOLERANCES	
.X	±.060
.XX	±.030
.XXX	±.015
FRACTIONAL	±1/16
ANGULAR	±1/2°
SURFACE FINISH $\sqrt{63}$	
DO NOT SCALE DRAWING DIMENSIONS ARE INCHES	

ICE QUBE, INC.
THIS IS A PROPRIETARY DOCUMENT. DO NOT REPRODUCE OR DISCLOSE WITHOUT THE EXPRESS WRITTEN PERMISSION OF ICE QUBE, INC.
 DESCRIPTION
IQ3000VS SPEC DRAWING
 DRAWING NUMBER
IQ351420
 REV
C



EVAP. OUTLET ≈ 158 CFM
 COND. OUTLET ≈ 236 CFM
 SOUND LEVEL @5FT FROM UNIT @ A HT. OF 3FT = 60 dBA
 SOUND LEVEL @2FT FROM UNIT @ A HT. OF 5FT = 65 dBA
 CONDENSER INLET MIN. CLEARANCE 2.27"

ITEM NUMBER N/A	USED ON IQ3000VS	UNLESS OTHERWISE SPECIFIED TOLERANCES X ±.060 .XX ±.030 .XXX ±.015 FRACTIONAL ±1/4 ANGULAR ±1/2°	<p>ICE QUBE, INC. <small>THIS IS A PROPRIETARY DOCUMENT. DO NOT REPRODUCE OR DISCLOSE WITHOUT THE EXPRESS WRITTEN PERMISSION OF ICE QUBE, INC.</small></p>
MATERIAL N/A		DESCRIPTION IQ3000VS SPEC DRAWING	
EST. WT.: lbs	DRAWN BY RCC	DATE 4/10/2017	DRAWING NUMBER IQ351420
		SCALE 1:5	REV C

DO NOT SCALE DRAWING DIMENSIONS ARE INCHES